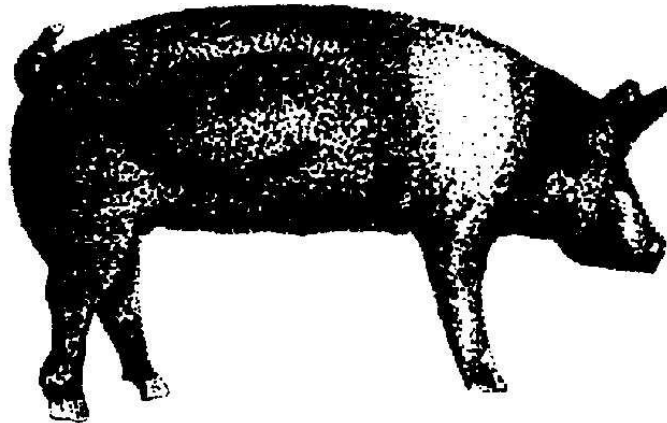


2010

DeSoto County Fair Swine Rules



DeSoto County Fair Association

P.O. Box 970

Arcadia, Florida 34265

(863) 494-5678

2010 DeSoto County Fair

Swine Calendar of Events

September 9, 2009	6pm	Mandatory Meeting @ DeSoto County Fairgrounds Exhibit Hall
September 9, 2009	6pm	Entry Fee Due at Mandatory Meeting
October 4, 2009	8-10am	Initial Weigh-In @ DeSoto County Fairgrounds
November 8, 2009	8-9am	Voluntary Weigh-In DeSoto County Fairgrounds
December 13, 2009	8-9am	Voluntary Weigh-In DeSoto County Fairgrounds
December 13, 2009	8-9am	Buyers Letters Due (3, self addressed, stamped, unsealed)
January 17, 2010	8-9am	Final Weigh -In DeSoto County Fairgrounds
January 17, 2010	8-9am	Record books are to be completed except Final Weight Page
January 23, 2010	8-9am	Record Books Due
January 23, 2010	8-9am	Swine Drop Off DeSoto County Fairgrounds
January 23, 2010	5pm	Swine Mandatory Meeting @ Livestock Barn
January 25, 2010	7pm	Swine Show
January 29, 2010	5pm	Livestock Awards
January 29, 2010	7pm	Livestock Sale
January 30, 2010	10am	Mandatory Clean Up & Buyers Thanks Letters Due
March 30, 2010		Buyers Plaque Receipts Due to the Fair Association

PLEASE TAKE NOTE OF CALENDAR, THERE ARE A LOT OF CHANGES IN DATES AND TIMES

General Fair Rules

On behalf of the DeSoto County Fair Association, you are invited to be a part of the Youth Livestock Exhibit at the 2010 DeSoto County Fair.

The Management of the DeSoto County Fair Association reserves the right to amend, add, or/and interpret the following Rules and Regulations; and to arbitrarily settle and determine all questions and difference in regard to , or otherwise arising out of, connected with or incident to the DeSoto County Fair.

The DeSoto County Fair and Livestock Committee assume no responsibility for the safety, loss or well being of exhibits. However, every reasonable precaution will be observed.

The owner or custodian of the property of any kind brought to the Fairgrounds, either for exhibit or for other purposes, assumes as a condition of its admission to the grounds, all risk and/or responsibility for its loss, damage, or theft. The Fair or its Officers cannot and will not accept responsibility and liability for any damage or injury resulting from theft, fire, elements, accidents or other conditions or causes; whether the exhibits, property of the Exhibitor, vehicles on the grounds and articles left therein or any other property of any nature whatsoever.

Exhibitors must reside in DeSoto County **and/or** be currently enrolled and actively attending a DeSoto County Elementary, Middle or High School program. ***If any exhibitor does not meet both of the previous requirements, they must submit a letter of request to participate in the DeSoto County Fair by September 1st to the Swine Chairman of the DeSoto County Fair Association.*** Exhibitors must be a bona fide member of a chartered 4-H or FFA program prior to the DeSoto County Fair. Also, be 8 years of age and no older than 19 years of age as of October 31, 2009. The Fair Board and Livestock Committee will reserve the right to ask for proof of school attendance. 4-H and FFA Leaders/Advisors will furnish an attendance record to the Livestock Chairman on January 8, 2010. Each exhibitor must meet the requirements of their club/chapter to be eligible to participate at the Fair.

Failure to submit required forms, documentation and entry fee at required time will result in not being accepted as an exhibitor. There will be no exceptions.

Exhibitors and Parents should not be under the influence of a controlled substance or alcohol.

Physical conditions of Exhibits which Management considers to be a problem in the show or sale may result in the Management not accepting any entry or allowing the entrant to participate in the show or sale.

Each Exhibitor must assume liability in case of death or injury to his/her animal until the end of the fair or until the animal is removed from the fairgrounds. At which time, market animals become the liability of the purchaser.

Tampering with any animal entered, such as filling with foreign substances, etc, is prohibited. The use of tranquilizers on show animals or possession of the same after arrival to the fair will be construed as a form of tampering. Tampering will result in immediate disqualification of the animal. No chemicals are to be administered within 30 days of show date unless administered by a veterinarian and abiding by the withdrawal of time on label and must be accompanied by a letter for him or her.

Any exhibit not receiving proper care (feed, water, etc.) will be cared for by show management. The exhibitor shall be assessed \$50 per feeding for such care from the premium or sale money due to exhibitor. Any exhibitor not attending to the cleaning and care of the animal and pen or stall area may be assessed as noted by the Livestock Committee.

The Livestock Committee reserves the right to reject or require removal of any animal because of health, unmanageability or inferior quality, at any time during the fair.

Premiums will be paid on the basis of the judging reports.

Age determination of showmanship and record book awards shall be based on the exhibitor's age as of September 1, prior to the Fair. Awards shall be divided into three classes: **Junior ages 8-11, Intermediate 12-14, and Senior 15-19, as of September 1, 2009.** See Specific Committee Rules.

All market animals will be weighed on scales provided by the Livestock Committee only.

Each livestock club is responsible for cleaning the exhibit area immediately following the show or usage of the arena and the bleacher area. Steer exhibitors are responsible for Sunday (grooming), Monday (Swine), Tuesday (Steer Show), Wednesday (Goat), Thursday (Breeding), and Steer and Swine will clean up on Saturday morning from Friday night's Sale.

If, for any reason, an exhibitor cannot attend the barn clean up day, they must make arrangements in advance with the Livestock Coordinator. The Livestock Coordinator will assign the exhibitor cleaning duties to be performed at a different time. Failure to participate in the barn clean up before or after fair will result in a \$50 fine.

Animals must be under the control of the exhibitor at all times.

All protests must be in writing, stating plainly the complaint, be accompanied by a fee of \$50, which shall be forfeited to the Fair in case the protest is not sustained and must be delivered to the Fair Management within 24 hours after the cause of the protest.

Any person, who knowingly violates any of these rules and/or provisions forfeit all rights, privileges, and premiums offered.

There will be a non-refundable, registration fee of \$25 due at the mandatory fair registration day. The fee will entitle a weeklong fair pass for one Exhibitor and 2 parents. Each additional child living in the same household will pay a registration fee of \$10 per exhibitor. Additional fair passes may be purchased thru the fair office. This fee does not include a Fair Membership as in past years.

The Livestock Show Categories are: Market Steer, Heifers, Market Swine, Poultry, Rabbits and Goats. Entry by exhibitor expressly implies their willingness to accept the decision of all judges.

GENERAL SWINE RULES

All exhibitors in this division are governed by the General Rules of the DeSoto County Fair Youth Livestock Show.

All Swine exhibitors and (1) one parent must attend the Mandatory Registration Meeting on, Wednesday, September 9, 2009 at 6 p.m. at the DeSoto County Fairgrounds Exhibit Building.

Upon acceptance into the Fair, exhibitors are under the Supervision of the DeSoto County Fair Youth Swine Livestock Committee. At the discretion of the Youth Swine Livestock Committee, any unbecoming conduct on the part of an exhibitor will result in disqualification, immediate removal of their animals from the Fairgrounds and the loss of any premiums or awards.

If any exhibitor is charged with any criminal offense (including criminal traffic charges), he or she will NOT be eligible to exhibit.

All animals must conform to all State of Florida Health Rules.

All property entered at the Fair for any purpose shall be subject to the control of the Livestock Committee.

All livestock exhibitors must be able to safely handle animals by themselves at all times while at the fair.

The designated exhibitor must show their entry (animal) unless otherwise approved by the Livestock Committee.

The Livestock Committee reserves the right to reject or require removal of any animal because of health, unmanageability or inferior quality.

No feeding of dog food will be permitted. This will be grounds for disqualification. Please be considerate of our buyers, remember they are purchasing a market animal for consumption. Feeding feeds such as dog food affects the taste of the meat.

Shots or medication may not be given to animals while at the fairgrounds, except with the permission of the Barn Superintendant and under supervision of a Veterinarian.

No medications drugs or other substances may be administered to swine after December 20, 2009, (30 days before final weigh in) or the withdrawal period on the label to comply with slaughter regulations.

All trailers hauling livestock to the fair must be cleaned and disinfected prior to arrival, according to State rules and regulations.

FFA and 4-H chapters are entitled to enter **ONE** market swine per year. Individuals may show and sell only **ONE** market swine.

Limitations of entries may occur in any show if the Livestock Committee determines it necessary. No joint ownership of animals will be accepted.

If your animal becomes ill, injured or dies you must contact the Swine Committee Chairman immediately. Failure to contact the Chairman will result in not being permitted to show the following year.

All breeds and crosses of domestic meat type hogs are eligible. **No** wild hogs, wild crosses or pot bellied pigs will be accepted or allowed on the fairgrounds at anytime. This is grounds for disqualification.

Exhibitors assume all liability in cases of death or injury to their animal. Every effort will be made to prevent accidents; however, Neither the DeSoto County Fair Association, the Livestock Committee, its members, nor the sponsorship of the fair will be responsible.

Animals disqualified from showing for any reason will not be eligible for sale at the fair.

All Swine exhibitors must turn in a completed record book on the animal being shown at the Fair. Completed record books must be turned in on **January 17, 2010** at swine drop offs. Record book must be complete, including all signatures. If no record book is turned in, the exhibitor will be disqualified from the show/sale and will remove the animal immediately from the fairgrounds.

Dress code for all exhibitors will be black jeans with a white long sleeve shirt, button up or snap with a collar. Exhibitors are encouraged to wear their FFA or 4-H jackets. Shirts must be tucked into pants with a belt and closed toed shoes/boots.

There will be no climbing on gates, bleachers or cages. Children are to be kept under control at all times by their parents.

All exhibitors who receive a trophy, medal, chair, plaque, etc. must write a Thank You letter to that sponsor. (There will be a sponsor address label on the item received or you can contact the Swine chairman for this information.)

There will be Sign – In Sheets in a binder on the bleachers for Swine Exhibitors to sign in for morning and afternoon feedings. Please make sure you sign in to acknowledge that your animal has been attended to. There will also be a sheet for you to sign in on for Show Night and clean up day. See a Swine Committee member for this sheet. You must sign in every day during fair week for record keeping purposes.

Weigh-In Information

There are only 80 pens allotted for Swine. Last year's exhibitors, who completed their project to the final weigh in and attend the **mandatory fair registration meeting, Wednesday, September 9, 2009 @ 6 p.m.**, will be automatically admitted. Those remaining swine pens will be filled with new exhibitors by drawing of names. If your name is not drawn you will not be able to show a swine this year.

Each Swine exhibitor must attend the **initial** and **final** weigh-ins to be eligible to show/sale. Exhibitor must have prior approval from the Livestock Committee for an excused absence. School functions or death in the family are acceptable excused absences.

All market hogs must be owned and in possession of exhibitors by the first weigh in on **Sunday, October 4, 2009**. Barrows must be castrated at least 2 weeks prior to the first weight in.

All exhibitors are limited to weighing, showing and selling one (1) swine.

Each exhibitor must attach **TWO (2)** color pictures to the entry form, *one* of the left side and *one* of the right sides of the hog. Pictures must be clear and animals must be clearly identifiable. All entry forms must be turned in at the initial weigh in on **Sunday, October 4, 2009**. Taking of pictures or filling out of entry forms at the initial weigh in **will not** be permitted. This should be done prior to the weigh in.

All market animals will be weighed on scales provided by the Livestock Committee only.

Initial weigh in will be **Sunday, October 4, 2009 from 8 a.m. to 10 a.m.** at the DeSoto County Fairgrounds. All hogs must meet a minimum weight of **40 lbs** and a maximum weight of **100 lbs**. You may ask for your swine to be re-weighed one (1) time only.

The Livestock Committee will weigh and put a Fair ear tag in all Swine. No other vaccinations, implants, or worming will be done at any weigh-ins by anyone. However, it is encouraged for all swine to be given preventative vaccinations and to be wormed before show/sale. If your swine loses their ear tag, please contact a Swine Committee member immediately.

Exhibitors and their parents are responsible for loading and unloading their animals at all weigh- ins. Members of the Livestock Committee will not load or unload any animals at anytime, and are not responsible for injury or death to animals.

No animals will be unloaded at weigh-ins, unless all paperwork is complete. This includes entry forms with two color pictures at the first weigh in and record books at the final weigh in.

At the **December 13, 2009** voluntary weigh-in, each exhibitor must turn in three **(3) original buyer's letters** to a Swine Committee member in an **unsealed, self addressed, stamped envelopes**. Failure to comply will result in a \$50 fine for each letter and will be deducted from sale proceeds.

At final weigh-in, **January 17, 2010**, hogs must weigh a minimum of **230 lbs** and a maximum of **310lbs**. **NO EXCEPTIONS!!!!!!!!!!!!** All trailers transporting hogs must be cleaned and pass inspection of State of Florida Inspectors. Failure to pass this inspection will result in disqualification. Hogs will not be left at the Fairgrounds at this time. You will drop of your hog, **January 23, 2010** between **8am** and **9am**.

Swine will be assigned to show classes by there final weight upon arrival to the fair, on January 23, 2010.

Parking at Fair

Anyone using vehicles to service animals (such as to bring in feed) must do so when the livestock gate opens in the mornings or during afternoon feeding times. **All** vehicles must be moved outside the fence one hour before the fair opens to the public.

The parking inside of the Rodeo Arena is reserved for Board of Directors and Vendors of the Fair only. If your vehicle is found inside the arena without the proper pass in the window, it will be towed at the owner's expense.

Barn Rules

There will be a designated area for exhibitors to keep their feed and supplies. This area is on the south side of the Livestock Barn, between the fence and the swine pens.

All exhibitors will receive a Fair Identification pass. You are required to wear your pass at all times when on the Fairgrounds.

Exhibitors are permitted to put a rubber mat in their swine pen.

Exhibitors are to wear closed toed shoes/boots in the barn at all times. **No flip flops, crocs or sandals**. You will be sent home to change your shoes.

All exhibitors, leaders and parents are expected to conduct themselves in a courteous, orderly, professional, positive, and sportsmanship like manner at all times, or they will be dismissed from the fair and will be banned from participating in future fairs. This includes show and sale nights.

Feeding

Any exhibit not receiving proper care (feed, water, etc.) will be cared for by show management. The exhibitor shall be assessed \$50 per feeding for such care from the premium or sale money due to the exhibitor. Any exhibitor not attending to the cleaning and care of their animal and pen, or stall area, may be assessed as noted by the Livestock Committee.

Your pig should be fed before transporting to Drop off on **Saturday, January 23, 2010**.

Morning feeding times are from **5am to 7:45am**. Afternoon feeding times are from **2:15pm to 5pm**. These feeding times are good for the week except for show and sale night. On show and sale night, feeding times are 1:00pm to 4:00pm. It is imperative that you follow this feeding schedule, so the Swine Committee can have time to clean pens. Early dismissal time from school will be announced closer to fair time. The Swine Committee will get with the school board for prior approval.

Any exhibitor at the barn during school hours, other than days they are preparing for a show (they are entered in), will be disqualified. Each committee will determine feeding times. This is to include home schooled children.

Exhibitors should care for and feed animals while at the fair with minimal assistance from parents and leaders. Parents and leaders may assist when safety and education are involved, but entrants must be present when parents or leaders are performing any grooming or related duties or exhibitor may have to forfeit their premium money.

After you have fed your pig, time permitting, exhibitor's can exercise the pigs in the show arena. This is good for them to burn off some extra energy, please take advantage. Always check with a Swine Committee member before exercising. We want to make sure that there aren't too many pigs in the arena at one time.

Cleaning of Swine Pens

While your pig is eating, do not leave the Livestock Barn. If your pig spills feed, you need to be there to pick it up.

When your pig is finished eating, pick up their feed pan and clean your pen with a shovel, place manure in buckets provided. The manure buckets are to be dumped in the dumpster that is on the east side of the barn, along with any uneaten feed.

Do not clean pens with water hoses, the Swine Committee will wash and disinfect the pens when everyone is out of the area.

Any exhibitor that leaves feed pans in pens will be assessed a \$50 fine.

Show Night – Monday, January 25, 2010

The barn will be open for you to prepare your swine beginning at 1:00 pm. Do not come before this time. The earlier you wash your pig, the longer they will have to get dirty again.

No use of electric clips will be permitted.

Exhibitors are **required** to wash their pigs prior to show and sale. They are to be ready for show by 5pm.

We recommend that you don't feed your pig before the show. This will help keep them clean and make taking pictures easier. If you choose to feed, only feed ½ of your normal portion.

There will be a Swine Committee person at the sections of the bleachers that will be roped off for the exhibitors. Exhibitors are required to be in the bleachers by 6:30pm. The Committee person will have your exhibitor number and will be placing you in the order of show. The show order will be posted in front of the area where the show boxes and feed are kept.

If the exhibitor is not in place when they are called to show their animal, they will be disqualified from show and sale. This is very important so we are not holding up the show.

Dress code for all exhibitors will be black jeans with a white collared long sleeve shirt, button or snap with a collar. Exhibitors are encouraged to wear their FFA/4H Jackets. Shirts must be tucked into pants with belt and close toed shoes/boots.

All parents are to leave the pen area by 5pm. Only Swine Committee Members are allowed in the pen area after this time.

No parents are allowed in the show ring at anytime during the show. Only appropriate Livestock Committee Members.

Exhibitors will be responsible for having animals prepared and ready for entry to show ring. Only immediate family members can assist in animal preparation. Professional fitters or any other persons not in the exhibitor's immediate family may not groom or help.

All hogs must be controlled and trained for show. Any hogs that constantly fight in the ring with other hogs will be confined to their pens. If your hog should begin to fight in the show ring, back up and let the ring men separate the hogs.

If you have shown your hog, won your class or placed second, DO NOT LEAVE THE BLEACHER AREA. You will be going back in the ring to compete for Grand and Reserve Champion. If you are not in the bleachers when you are being called back, you will be disqualified from show and sale.

There will be a second judge that will be judging the Showmanship at the same time your weight class is being judged. **If you are called back for Showmanship, please return to the bleachers until it is time for you to go back into the ring. If you leave the bleacher area, we will not hold up the Showmanship judging to wait for you. You will forfeit your ability to show for this particular honor.**

Exhibitor can only show their own animals in Showmanship.

FFA and 4-H hogs are NOT eligible to compete for Grand Champion and/or Reserve Champion honors.

Each Livestock club is responsible for cleaning the exhibit area immediately following show or use of the arena and bleacher area. If you see trash, please pick it up. It will benefit you at the end of the day. Do not leave the show before we have cleaned up. After the area is clean there will be a sign in sheet, be sure to sign it. There will be a \$50 fine if you do not help clean up.

Sale Night – Friday, January 29, 2010

Awards will be presented at 5pm on January 29, 2010. **All** exhibitors are required to attend. If you do not attend, you will forfeit any award you may have won.

The barn will be open for you to prepare your swine beginning at 2pm. It is recommended that you feed then wash your pig. No use of electric clippers is permitted.

Exhibitors are required to wash their pigs prior to show and sale. They are to be ready for sale by 5pm.

Each exhibitor is responsible for being ready and in sale line up order. If you are not ready when called, your swine will be sold at the end of the sale.

All re-sale swine will sell immediately after the last White Ribbon hog at the end of the sale. If the animal is a re-sale the proceeds will go to the organization (original buyer's recommendation) not the exhibitor.

All Swine will be dispatched to the processor (slaughter house). The DeSoto County Fair Association is not responsible for any expenses, such as feed, for the animal once it has left the fairgrounds.

All swine accepted to show **MUST** be consigned to sale; this is a terminal show and sale. All animals must be removed Saturday morning with NO EXCEPTIONS.

Swine will be sold in the following order:

- ~Grand Champion
- ~Reserve Champion
- ~Blue Ribbon – By Class
- ~Red Ribbon – By Class
- ~White Ribbon – By Class

If an Exhibitor has received an additional achievement, then they will move to the top of their specific ribbon class. The following is the list of achievements:

- ~Junior 4-H Record Book Winner
- ~Intermediate 4-H Record Book Winner
- ~Senior 4-H Record Book Winner
- ~Junior Showmanship Winner
- ~Intermediate Showmanship Winner
- ~Senior Showmanship Winner
- ~Outstanding Junior Exhibitor
- ~Outstanding Intermediate Exhibitor
- ~Outstanding Senior Exhibitor
- ~Weight Gain
- ~Intermediate FFA Record Book Winner
- ~Senior FFA Record Book Winner

Judging

A modified Danish system of judging will be used. All decisions of the judges are **FINAL**. No awards will be given and no premiums paid to any animal in any class that in the opinion of the judges does not deserve that award.

Ribbons awarded for placement will be paid premiums as follows:

- Blue - \$20
- Red - \$15
- White - \$10

Trophy buckles will be awarded for Grand Champion, Reserve Champion, Junior, Intermediate, and Senior Showmanship.

Record Books

All exhibitors must use a DeSoto County Fair Swine Record Book and must be completed (including signatures) by Swine drop off. Failure to submit a record book at acceptance of entry will result in disqualification of exhibitor. Exhibitors are encouraged to turn in a Record Book whether their Swine makes weight or not. All completed record books will be judged. Please make sure your record book is legibly written and neat.

All divisions of submitted record books will be judged on completeness, accuracy, and neatness. Record books will be judged separately in three age divisions – Junior, Intermediate, and Senior. Judging will be performed by qualified out of town judges.

Clean Up Day

Each Swine exhibitor must bring their Buyer's Thank you card/letter with self addressed, stamped envelope to the Mandatory Clean up on **Saturday, January 30, 2010 @ 10am**. Failure to comply with attendance and/or Buyer's Thank-you card/letter will be subject to a \$50 fine for **each** and will be deducted from sale proceeds.

If, for any reason, an exhibitor cannot attend the barn clean up day, they must make arrangements in advance with the Livestock Coordinator. The Livestock Coordinator will assign the exhibitor cleaning duties to be performed at a different time. Failure to participate in the barn clean up before or after fair will result in a \$50 fine.

The Swine Committee Chairman will have a list of buyer's address's available for you to address your Thank You cards.

All exhibitors are required to pick up all rubber mats, feed pans and show boxes at this time.

Buyers Plaques

Each exhibitor will receive a Buyers Plaque to give to their Buyer. A member of the Swine Committee will contact each exhibitor with a date and time to pick up the plaques. These are generally ready for pickup within 2 weeks.

There will be a plaque receipt for your buyer to sign attached to your plaque. Exhibitors are **required** to deliver the plaques to their buyer and return the receipt to the DeSoto County Fair Association by March 30, 2010.

If the plaque is **not** delivered, you will **not** receive your sale check until your plaque receipt is received by the Fair Association. **There will also be a \$200 fine deducted form your sale check for not returning your plaque receipt to the fair association on time.**

Exhibitors will need to mail the plaque receipt to: DeSoto County Fair Association, Attention Swine Committee, PO BOX 970, Arcadia, Florida 34265. **This must be postmarked no later than March 30, 2010.**

Sale Checks

The DeSoto County Fair Association, Board of Directors, Members and Swine Committee Chairman jointly and severally, specifically and irrevocably decline to and will not act as a agent for any exhibitor of any event, including the Youth Swine Sale, for any legal action whatsoever taken or in the collection of proceeds of any bid rendered for purchase of any animals at the sale held at the DeSoto County Fair.

The DeSoto County Fair Association and Swine Committee will make all reasonable effort in the normal billing process for collection of any bid rendered by individuals, companies, partnerships or corporations for the purchase of any animal offered for sale at the DeSoto County Fair.

If no response is rendered and the Fair Association has determined that the account cannot be collected, the exhibitor will be notified.

Two percent (2%) of sale proceeds from each exhibitor will be deducted by the DeSoto County Fair Association to help defray expenses. **The 2% will not be deducted from any add-ons.**

There will be \$30 charged to each exhibitor for the cost of the buyer's plaques and picture.

Checks will be mailed to exhibitor after March 30, 2010, provided the DeSoto County Fair Association has received payments from purchaser, a signed plaque receipt by the exhibitor, add-on monies have been paid and all other requirements have been fulfilled.

Add-on monies are only given to Exhibitors whose swine made final weight, show and sale.

Once the Slaughter House has taken possession of the animals, the buyer is responsible for any expenses that may occur, to include feed.

Thank You in advance for your support and cooperation.

Swine Committee Chairman and Committee